

# Santa Fe Square



## SPECIFICATIONS:

### Housing:

A weather tight unit fabricated from one-piece aluminum .080" thick, continuous heliarc welded at all seams, 1/4" Clear Acrylic Lens. Full gasket keeps out insects and water.

### Optics:

Both the interior reflector and the polished para-line distribution reflector are made of spun aluminum; they provide extremely high reflectivity to produce wide efficient light distribution

### Electrical Assembly:

HID ballast constant wattage auto-transformer high power factor core and coil type, rated -20 degrees Fahrenheit starting temperature. Integrally mounted in the luminaire and completely prewired. Each ballast Assembly is thoroughly tested prior to shipment. Ballast and electrical Components are "UL" listed.

### Lamp Socket:

Porcelain Socket pulse rated at 5K & 600V for HPS, MH & PS lamps.

### Finish:

Thermoset polyester textured Powder Coat, chemically pretreated through a multiple stage washer, Oven baked at 400 degrees Fahrenheit to insure maximum adherence.

## Job Information

Project: \_\_\_\_\_ Date: \_\_\_\_\_

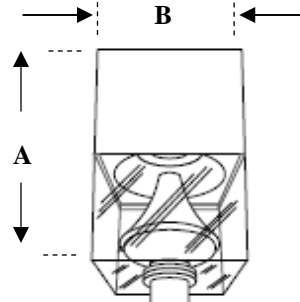
Location: \_\_\_\_\_

Fixture Type: \_\_\_\_\_ Cat. # \_\_\_\_\_

Lamp: \_\_\_\_\_ Volts: \_\_\_\_\_


Options & Accessories: \_\_\_\_\_

## DIMENSIONAL DRAWINGS



Fixture	A	B Sq.	Max. Watts	EPA
SFE-1	20"	12"	250w	2.12
SFE-2	32"	20"	400w	5.19

## ORDERING INFORMATION:

Model	Optics	Wattage	Source	Voltage	Mounting	Finish	Options
<ul style="list-style-type: none"> <li>SFE-1</li> <li>SFE-2</li> </ul>	Symmetric <ul style="list-style-type: none"> <li>(SYM)</li> </ul>	70w <ul style="list-style-type: none"> <li>(70)</li> </ul> 100w <ul style="list-style-type: none"> <li>(100)</li> </ul> 150w <ul style="list-style-type: none"> <li>(150)</li> </ul> 175w <ul style="list-style-type: none"> <li>(175)</li> </ul> 250w <ul style="list-style-type: none"> <li>(250)</li> </ul> 320w <ul style="list-style-type: none"> <li>(320)</li> </ul> 400w <ul style="list-style-type: none"> <li>(400)</li> </ul>	High Pressure Sodium <ul style="list-style-type: none"> <li>(HPS)</li> </ul> Metal Halide <ul style="list-style-type: none"> <li>(MH)</li> </ul> Pulse Start Metal Halide <ul style="list-style-type: none"> <li>(PS)</li> </ul>	120 Volts <ul style="list-style-type: none"> <li>(120)</li> </ul> 208 Volts <ul style="list-style-type: none"> <li>(208)</li> </ul> 240 Volts <ul style="list-style-type: none"> <li>(240)</li> </ul> 277 Volts <ul style="list-style-type: none"> <li>(277)</li> </ul> 480 Volts <ul style="list-style-type: none"> <li>(480)</li> </ul> Quad-tap <ul style="list-style-type: none"> <li>(MT)</li> </ul> Multi-Tap Ballast Factory wired at 277 v unless otherwise specified.	Pole top Adaptor (PTA) 	Bronze <ul style="list-style-type: none"> <li>(BZ)</li> </ul> White <ul style="list-style-type: none"> <li>(WT)</li> </ul> Black <ul style="list-style-type: none"> <li>(BK)</li> </ul> Green <ul style="list-style-type: none"> <li>(GN)</li> </ul> Grey <ul style="list-style-type: none"> <li>(GY)</li> </ul> Custom Color <ul style="list-style-type: none"> <li>(CC)</li> </ul> Consult Factory	Photocell 120 - 277v <ul style="list-style-type: none"> <li>(PC__)</li> </ul> Photocell & Shorting cap <ul style="list-style-type: none"> <li>(PSC)</li> </ul> House Side Light Shield <ul style="list-style-type: none"> <li>(HSS)</li> </ul> Round Pole adaptor <ul style="list-style-type: none"> <li>(RPA)</li> </ul> Wall Plate <ul style="list-style-type: none"> <li>(WP)</li> </ul>

Direct Lighting Sales reserves the right to make modifications or changes to any of its products without prior written notification and without incurring obligation. Actual performance can vary depending on surrounding conditions